

Opening of Edmund Hillary Building



Lady June Hillary, Hon John Key Prime Minister, Gregor Coster Chair CMDHB and His Worship the Mayor Len Brown officially open the Edmund Hillary Building

The Edmund Hillary Building was officially opened on 15 July 2010 by the Hon John Key, Prime Minister.

In attendance were members of the Hillary Family, including Lady June, Peter and Sarah Hillary. His Worship the Mayor Len Brown, local MPs, CMDHB Board members and other dignitaries also attended.

“We are delighted and honoured to name the building after such a legendary icon,” says Professor Coster, Chairman, CMDHB.

“In fact the connection with Sir Edmund Hillary goes beyond the name, with the mauri stone being buried on the day of his funeral – January 22, 2008.”

Peter Hillary spoke of his fathers connection with Middlemore Hospital, having opened Emergency Care in 1991.

He spoke of his father’s passion for climbing and his

tireless work for the Himalayan Trust, which continues to this day.

His Worship the Mayor Len Brown touched on Middlemore’s history and commented on how far we had come over the past 63 years.

“CMDHB provides much needed health services and facilities for our growing and ageing population,” says Len Brown. “Facilities such as the Edmund Hillary Building are providing for the future needs of our community.”

The Prime Minister congratulated the CMDHB on the work they were doing and said the Government would continue to support its health initiatives.

Opening of Edmund Hillary Building (continued)

John Key also complimented the South Auckland Health Foundation on their fundraising work. “My wife is involved with fund raising and it can sometimes be a challenging and hard job.”

After the speeches Hillary Collegiate College presented a piece of artwork to Professor Coster, which will go up in the new building. The dignitaries then proceeded to the Edmund Hillary Building, for the ribbon cutting, unveiling of the building plaque and a stunning series of photos unveiled by Sarah and Peter Hillary.

The photos, kindly donated by Selwyn Lang a Microbiologist at Middlemore, tell a special and unique story, photographed in Nepal in 1970/71

The dignitaries then went on a guided tour of the Haematology Day Ward and Clinics, the Cardiac Investigation Unit and Ward 35 Koropiko. “It was wonderful to meet the Prime Minister and Hillary Family,” says a Koropiko patient. “It’s an occasion I’ll always remember.”



Professor Coster and Hon John Key unveil the building plaque



Professor Coster receives the artwork from Hillary Collegiate College



Hilary and June Carlile, Peter Hillary and Alistair Carlile



Hon John Key talks with a patient on Ward 35 Koropiko



Hilary Blacklock, Peter Hillary, June Carlile and Sarah Hillary in the Haematology Day Ward



The haka powhiri group from Hillary Collegiate

New beginnings for Gastroenterology



From [L] to [R] Nigel Naylor, Pam Brown, Charmaine Munro, Tarani Lave and Ravinder Ogra

The new Gastroenterology Floor on Level 2 of the Edmund Hillary Building was officially opened on 21 June 2010.

Guest speakers included Brad Healey, GM Acute Care, Ravinder Ogra, Gastro Consultant, Nigel Naylor, Gastro Charge Nurse, Susan Parry, Gastro Consultant and Charmaine Munro, Charge Nurse, Gastro Ward.

“From a department that started with a couple of Physicians doubling up as Gastroenterologists, the group has expanded to 10 fully trained Gastroenterologists today,” says Ravinder Ogra, Gastroenterology Consultant and Head of Department. “We can now boast to having a fully functional liver disease unit and complete inpatient facility. We’ve come a long way from those early years and have grown into a centre of excellence.”

“The old Gastro Department was based in Building 15 - one of the oldest parts of the Hospital,” says Nigel Naylor. “We have gone from a war era building to a modern and spacious facility.”

“The extra space has also enabled the Gastroenterology Service i.e. ward, day ward and clinics to be located together, says Charmaine Munro.

“This provides easy and quick access between departments and a closer relationship between staff working across the floor.”

Special guest Pam Brown joined Charmaine Munro in cutting the ribbon. Pam is a retired gastroenterologist and ran the Gastroenterology Department from 1970-1991.

The first Gastroenterology Service at Middlemore Hospital was set up in 1967 by Dr Clifford Tasman Jones in a part-time capacity. This included a consultative service on the wards, an Outpatient Clinic (which increased to 2 in 1970) and diagnostic procedures.

In 1975 part of the wing in which the old Orthopaedic Theatre and staff lounge were situated was converted into a specifically designed Gastroenterology Department. The staff were delighted to finally have a spacious area in which endoscopies and other procedures could be carried out. In the late 70's Gastroenterology clinics increased from two to four outpatient clinics per week, each with 25 to 30 patients.

Clinical Coding and Allied Health celebrate the opening of their refurbished departments



Olataga Palelei, Clinical Coding and Jenni Coles, Adult Rehabilitation and Health of Older People cut the ribbon

Staff from Clinical Coding and Allied Health Offices officially blessed and opened their new departments on 6 July 2010.

For both areas it was a chance to celebrate new beginnings and acknowledge the work taken to get to this stage.

As you may recall Ward 22A used to belong to AT&R and Ward 22 to Mental Health Services for Older People. After some minor building works and a fresh coat of paint both wards have been transformed into a fresh, spacious and inviting space for Clinical Coding and Allied Health.



Clinical Coding

Clinical Coding moved into Ward 22A in June 2010 and staff are settling into their new 'home'. It's larger and a lot brighter than their old Department and the outdoor deck will be popular in summer. Overall it's a nicer space to work in.

Allied Health's offices opened in old Ward 22 on 12 August 2010, along with a refurbished outpatient area in Ward 25. "Staff are very excited to have a separate outpatient area and a dedicated office space," says Jenni Coles, GM Adult Rehabilitation and Health of Older People .

"This separation means we now have additional space for extra clinics. We are also looking forward to developing closer links between rehabilitation and outpatient services."

New name for Mental Health Services for older people



Staff and patients took part in the celebration

Staff and patients from Ward 35 came together to bless and celebrate the new name of their ward “Koropiko” and unveil the new tuku tuku panel that stands proudly in the main lobby.

A lot of thought went into the renaming and after a series of discussions between the Te Puna Waiora Taumata Kaumaatua group Maaori Mental Health and the staff from Mental Health Services for Older People and service users it was decided that Koropiko - *Koro* meaning elderly and *Piko* meaning to end or bow was a perfect fit.

It’s a name that recognises the characteristics of our elderly who are knowledgeable, humble, kind, respectful and loving.

The design in the tukutuku panel symbolises the “Stairway to Heaven” pattern which means “Poutama” in Maori mythology.

This design is used by many Maori Health Services in the DHB sector as a model of practice to show – “Each step of the Poutama” as an intervention, an assessment process, a pathway to recovery and to maintain a healthy lifestyle.

Many thanks to Sharon McFarland, Manager Te Puna Waiora and Te Taumata Kaumaatua, Whitiora Cooper, Tau Thompson and Te Hira Moana-Wharenui.

Mental Health Services for Older People (MHSOP) is an integrated assessment and treatment service for older people (65 and over) with moderate to severe mental health problems or behavioural and psychological symptoms associated with Dementia.

Koropiko has a 15 bed inpatient unit based on Level 5 of the Edmund Hillary Building, Middlemore Hospital and two geographically divided Community teams.

Calling all cyclists



From [L] to [R] Greg Simpson and Professor Gregor Coster officially open the Bike Park

On Wednesday 4 August a small group braved the cold and rain and cycled to work for the opening of Middlemore's new Bike Park. This included Chairman Gregor Coster and Greg Simpson, GM Facilities who officially opened the new facility.

The new Bike Park has space for 40 bikes, is under cover, is well lit, secure and is close to the entrance into the Edmund Hillary Building, where showers and lockers are available in the basement.

"It's a great way to get to work, keeps you fit and is a cheaper option than using your car, plus you don't have to worry about finding a car park."

In order to maintain the security of your bikes you will need to a) secure your bike to the racks provided and b) register your swipe card with security. This will require a letter from your Manager.

Additional Monitoring Rooms improves patient flow

Staff gathered for the Blessing of two new monitoring rooms on 1st July 2010. This will reduce the assessment bays to 25 and increase the monitored bays to 10.

The additional monitoring bays are helping to ease some of the demand on the assessment bays and are improving patient flow through the area



Staff from EC gather for the Blessing

Preparation works for the new Clinical Services Building (CSB)

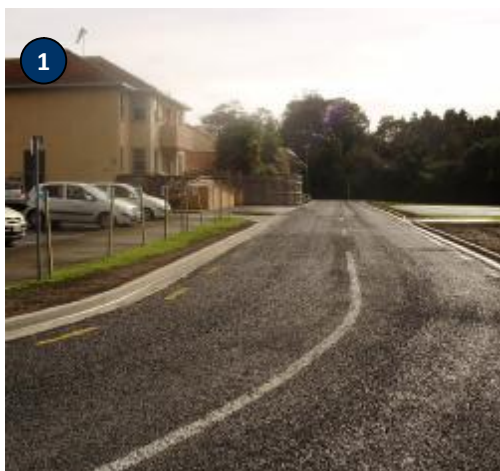
The CSB preparation works are moving along at a steady pace. So far we have completed ..

- ✓ The refurbishment of old Ward 22, Ward 22A and Ward 25
- ✓ The relocation of Allied Health Staff Offices (Ward 22), Clinical Coding (Ward 22A) and Allied Health Outpatients (Ward 25)
- ✓ Completion of the ring road at the back of AT&R – This is now a two-way road
- ✓ Relocation of the RMO Lounge to the outside of Building 30.
- ✓ Relocation of the waste compactor to the outside of Building 30.
- ✓ Relocation of Gastroenterology Day Ward and Clinics and Haematology Day Ward and Clinics to Level 1 (Haematology) and Level 2 (Gastro)
- ✓ Relocation of the Spiritual Centre, Mail Room and Non Clinical Support Services (Orderlies and Cleaners). The Spiritual Centre and Mail Room are now located in the old cardiac corridor (the same corridor as parking and security) and Orderlies and Cleaners are located outside building 7.
- ✓ Opening of the new corridor between the Edmund Hillary Building and Building 7

Coming up ...

- Relocation of the Linen Room to the old Allied Health Outpatient Department (off the Rainbow Corridor) – 9 September
- Demolition works continue for Buildings 15, 16, 17 and 18
- Partial demolition of the Rainbow Corridor – mid September
- Construction of the first phase of the CSB starts November 2010

Ring Road



The double laned ring road is now open with many vehicles taking advantage of the quick access around the site.

RMO Lounge



The RMO Lounge is now open

- 3 The Mail Room moved to the old cardiac corridor on 19 July 2010 and was up and running from day one.

Well done to Sharon, Jack Anne and Jeanette for coping with the shift and still managing to collect and deliver the mail on time.



Mail Room

- 4 The relocated Spiritual Centre and Muslim Room opened its doors 19 July 2010. Sunday Services will be held in the Kidz First seminar room, until an alternative option is found. Thanks to the Chaplains for their support and cooperation with the move.



Spiritual Centre

- 5 What's happening outside the Kidz First main entrance?

The Kidz First roundabout, which includes the garden is being reconfigured to maintain safe vehicle and pedestrian flow to and from the Kidz First main entrance, while construction takes place on the new CSB.

Works will also take place around the Energy Annex Centre (by the Kidz First car park) as a new boiler, chiller and domestic water storage tank are installed. This will help meet the demands of the new building.



The Kidz First round-about is being reconfigured



The new corridor between Edmund Hillary Building and Building 7 is now open. This will replace a section of the Rainbow Corridor



The foundation for the new building 19 is being laid.

Working together



Non Clinical Support Staff gather for a blessing of their new area

Non Clinical Support Services (Orderlies and Cleaners) came together to bless and celebrate the opening of their new compound.

Comprising of two portacoms and a communal lunch area the new facility is a vast improvement on the old premises (photos on the right). The lunch room, shown in the top photo is already feeling like home with Tapa Cloths and artwork on the walls.

“We are delighted with our new ‘home’, which is a lot larger, brighter and more spacious than the old one,” says Shankara Amurthalingam, Operations Manager. “In the past the cleaners and orderlies were located in separate sections of the Hospital – it will be great to have the entire team together.”

Access to Non Clinical Support Services (Orderlies and Cleaners) is via the old cardiac corridor – the same corridor as parking and security.



The old orderlies portacom (above) and the cleaners area below are now deserted



Farewell to our old buildings



Take one last look at Buildings 15,16 and 18 as demolition gets underway. Building 17 will be demolished following the relocation of the Linen Room on 9 September 2010 and the first section of the Rainbow Corridor (from the lower entrance of the Academic Lecture to old clinical coding) will come down approximately mid September 2010. The remaining half of the Rainbow Corridor will be demolished mid 2011.

You may not see much activity happening on the outside of the buildings as most of the services e.g. data, cables and pipes are being stripped from inside the buildings first.

Work is also taking place in the tunnels and under the buildings.

All staff are invited to a Farewell ceremony to the Rainbow Corridor

All staff are invited to attend a farewell ceremony to the Rainbow Corridor on **3 September 2010 from 3pm – 4pm.**

It's an opportunity to share some of the history of the corridor, which dates back to the early 40's when it was used to transport servicemen wounded in the Pacific War to various parts of the Hospital.

In the years to follow the Rainbow Corridor has become a major part of our culture and a successful way-finding land mark. A lot of discussions have also taken place along these colourful walls.



Rainbow Corridor

We remember our history

The Rainbow Corridor and some of the surrounding buildings have played a major part in our history and culture since the Hospital opened in 1947. Over the years people have come and gone, services and departments have expanded but the backbone of these buildings and the memories have remained. While we make way for new and improved facilities it's important to recognise the past and celebrate how far we have come over the past 63 years.

So where did it all begin?

Middemore Hospital or back then Otahuhu Military Hospital was built in 1942 as a temporary military hospital for wounded US servicemen. In fact the Rainbow Corridor was designed to enable jeeps to drive down the corridor with casualties on the back.

After the war ended the brand new hospital no longer had a purpose and a debate took place about whether it should be closed down. The good news is that the Department of Health saw it as an asset and in 1947 Middlemore Hospital was officially opened by His Excellency the Governor General, Sir Bernard Freyberg.

When the Hospital first opened the design of the wards consisted of ten wards arranged in 5 two storied wings. These wings were linked to a spine – a corridor set over a concrete tunnel for services.

Each ward had 29 patients in 5 four bedded rooms, 1 two bedded room, 7 single bedded rooms, a balcony facing the sun and gardens. Service rooms were located on the shady side of the ward, along with a central ward office.

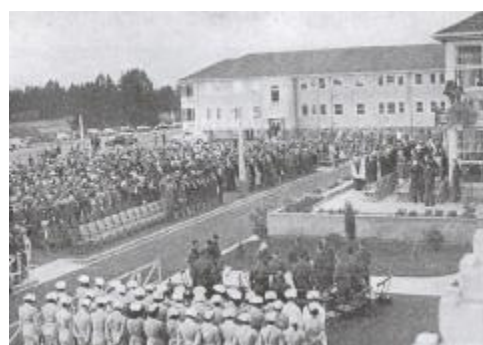
The first patients to be admitted were 24 servicemen with chronic war injuries transferred from the Soldier's Annexe at Auckland Hospital and the first civilian patient was Frances Wharfe, admitted with pain in the left hip and knee.

As for the staff who worked in the Hospital, the first Medical Superintendent was Dr H.J.C. Colvin, Olive Mercy Hollan, the first matron and Colonel Clarrie Newman who fought in both World Wars with distinction, the first House Manager.

A lot has changed over the years, however our culture and dedication to our patients remains.



The front entrance of Middlemore Hospital 1947



A view of the opening ceremony - 1947

Various milestones in the history of Middlemore Hospital

1943	Construction began
1947	Middlemore Hospital opens
1950	Plastic Surgical Unit
1961	Obstetrical Unit
1964	Galbraith Unit
1965	Geriatric Unit – ex Cornwall
1973	Coronary Care Unit
1977	Spinal Unit
1978	Neonatal Unit
1988	New Geriatric Unit
1989	CT scanner, 3 extra theatres, plastic surgery and dental building

While we say goodbye to the past we embrace the present and future and look forward to creating and sharing new memories.

Heads-Up: ON THE MOVE at Middlemore Hospital

Department	Moving from	Moving to	Date
Midwives	Building 43	19 Lambie Drive	18 August
Linen Room	Building 17	Old Physio Gym – off the Rainbow Corridor	23 August
Executive Management	Staff Centre	Ward 21 Galbraith	31 August 2 September

Ward 4 moves to Ward 6 AMC

Ward 4 successfully moved to Ward 6, AMC on Thursday 5 August 2010.

30 patients made the move, along with nursing and medical staff and tons of equipment/items.

Many thanks to Charge Nurse Pauline Owens and her team for coping with their busy day to day workloads on top of a move to a new Ward.

Thanks also to Janet Kamau, Migration Coordinator and Leanne Breedveld, Fit-out coordinator who worked behind the scenes.



Leanne Breedveld, Pete from Allied Pickfords, Pauline Owens and Janet Kamau

New Adult Medical Centre (AMC) Lifts up and running

The new, larger and improved AMC Public Lifts are now up and running. These replaced the original public lifts.

The new public lifts open up into new lift lobbies with quick and easy access into the Wards.

The old public lifts will now be decommissioned and removed. In their place, on Levels 1-5 will be new whanau/meeting rooms and public toilets.



New Public Lifts

Did you know

Many staff have asked the question about the gradients or dips in the new corridor between Edmund Hillary and the Adult Medical Centre. The good news is that the floor will be level with the AMC, EHB and the new CSB when construction of the CSB is completed at the beginning of 2014.

Parking Plans for Middlemore Hospital

As Middlemore continues to grow and develop, so does the demand on our staff and visitor car parks.

In the coming months, car parking will become more of a challenge as we begin construction of a new Clinical Services Building and a Centre for Health Services Innovation.

Both of these new facilities will provide improved services for our patients and staff and put us further on the map in regard to research, teaching and innovation.

So what are the answers to the car parking challenges?

There is no quick fix to the parking challenges on the Middlemore site, but there are short and long term solutions.

The map on page 15 gives an overall view of where our future car parks will be located. Some of this work will be staged over the next few months and we will be keeping you up to date as we move forward.

Plans for the Western Campus?

In a nutshell the Western Campus will be predominately used for staff parking, freeing up a number of parks on the Middlemore site for visitors.

From Monday 2 August 2010 - November 2010 two additional floors will be built on the Western Campus Parking building.

This will provide an additional 202 parks. The top floor of the car park and some peripheral parks around the car parking building will be temporarily out of action while construction takes place.

Additional staff car parks will also be available following the demolition of Buildings 39 (Awhitia) and 43 (Women's Health) in September 2010. Staff from Women's Health will relocate to 19 Lambie Drive, thereby freeing up further car parks. These new car parks will be available for temporary use in



Building works on the Western Campus car park have commenced. This has resulted in the temporary loss of the top floor (until late October 2010), while an additional two floors are built. The end result will be an extra 202 staff car parks. We apologise for any inconvenience this may cause and ask for your patience during the construction period.

November 2010, until the Western Campus car park building is completed. Work will then take place to turn this area into a permanent car park, providing staff with a further 100 spaces.

So to sum up the entire Western Campus site will go from 542 spaces to approximately 932 spaces.

With the increased pedestrian traffic across Hospital Road, the plan is to introduce a controlled crossing and a modified pavement near the vicinity of the Galbraith entrance.

This will facilitate good traffic flow and allow pedestrians to cross safely and in a controlled manner.

What's happening on the Middlemore Site?

As the map highlights establishment of a Centre for Health Services Innovation on the Middlemore Site will result in the loss of staff car parks in the area.

These staff car parks will be replaced by the Western Campus construction, turning the northern AMC car park into VISITOR parking only.

The S-Bend park and hard-standing area remain and the PM car park moves closer to the back of the site (across from the Helipad).

Pool cars move back to their original position (near the crèche) and SMO parking remains unchanged.

Changes to access

When construction commences for the Clinical Services Building (approximately November 2010) the roadway just past the Kidz First entrance will be BLOCKED OFF.

Please note access to the Kidz First drop off area and main entrance will remain unchanged.

To access Tiaho Mai, the PM car park, and some of the SMO parks near AT&R you will need to come in via Gate 1 and travel around the back of the site (this is now a two-way road).

You will also need to exit via the same way i.e. via Gate 1.

It's going to be a busy time ahead and there will be a lot happening on both Middlemore Hospital and the Western Campus.

CMDHB is also working with the Manukau City Council and the Auckland Regional Transport Authority on a traffic management plan and a staff travel plan to ease traffic congestion, improve vehicle flow around the Middlemore Site and provide alternative transport options for staff.

For further information about the Car parking plan and Staff Travel plan check out the Towards 20.20 web site. Access via SouthNet

Easing pressure on our car parks

While construction works take place on the Western Campus from 2 August - late October 2010, increased train ticket subsidies have been offered to encourage people to use the 'park and ride' option.

This is just one of the options being looked at to ease some of the pressure on our staff car parks.

The new train ticket prices commenced on Monday 2 August and will run for 3 months only.

All staff must show their staff ID before purchase and only one ticket will be sold per staff member per week at the new price.

If multiple tickets are required at one time, staff will be charged full price for each ticket.



New Ticket Prices:

Middlemore to:

One stage was :\$10.50 New price: \$5.50
Two stage was :\$21.00 New price: \$16.00
Three stage was \$29.00 New price: \$24.00
Four stage was \$37.00 New price: \$32.00
Five stage was \$43.00 New price: \$38.00
Six stage was \$48.00 New price: \$43.00
Monthly tickets \$140.00 New price: \$135.00



Contact

Communications Coordinator

Janet Haley

TOWARDS 20/20

Counties Manukau District Health Board.

C/- Projects Office, Building 25

Private Bag 94052

South Auckland Mail Centre

Auckland

Ph: (09) 262-9500

Fax: (09) 270 9714

Mobile: 021 443 731

Email: haleyj@middlemore.co.nz

Web: www.cmdhb.org.nz

Towards 20/20 Web Site

In the internet explorer address bar type:

<http://www.cmdhb.org.nz>

Click onto Towards 20/20.

The Towards 20/20 web site has been designed to inform staff about the modernisation and redevelopment projects occurring across the CMDHB sites.

You'll find background information and regular updates on the various projects, along with updated photographs of construction activities, floor plans, copies of Towards 20/20 NEWS and much more.

A job well done – Non Clinical Support Services

Many thanks to Barbara Schwalger, Team Leader Cleaning Services and her team for the way they handled the flooding and water damage caused by a sprinkler activation in the AMC.

Barbara's team had to mop up some of the water by hand or use specialised equipment.

"The team work was great and the fire service was very impressed with the quick response," says Terry Jordan, CMDHB Fire Officer.

"The next morning you couldn't tell that anything had happened, as the area was clean and dry."

"This is not the first time that House Hold Services have helped us out. I'd like to say a big thank you to Barbara and her team."

Good 2 Great

If you have any suggestions or story ideas for the Towards 20/20 newsletter or if you would like to hear about a particular Project please get in touch with Janet Haley (contact details above)