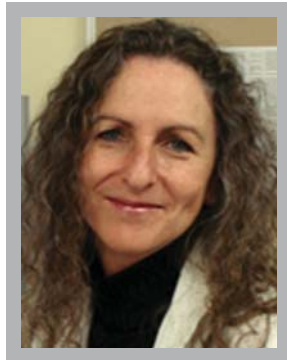


# BUILDING TOMORROW'S HEALTH SERVICES

# Biography



## **Dr Sue Hallwright**

*Manager, Mental Health and Addictions Service Development*  
**Counties Manukau District Health Board**

---

Sue has an MBChB, her FRANZCP and an MBA. She has worked in the mental health sector for over twenty years, initially in clinical roles, then in management, funding and planning and service development.

Over the past six years, she has provided advice to governments and healthcare providers within New Zealand and abroad. Her work focuses on enhancing mental health services so that they better support people with mental illnesses/issues to achieve recovery.

She began the Mental Health and Addictions Service Development Team in August 2002.