

What makes populations healthy? How do we prioritise health spending?

Alistair Woodward

School of Population Health

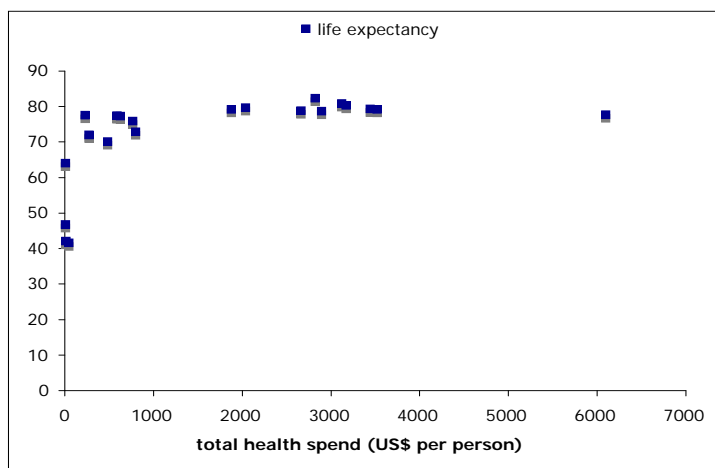


- Consider all means
- Comparing is easy: choosing is difficult

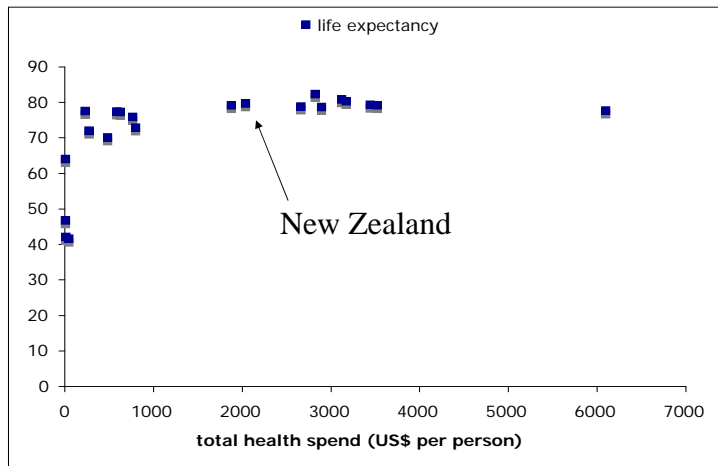
Three questions

- What explains the *current level* of population health?
- What explains *changes* in population health?
- What explains the *distribution* of health within a population?

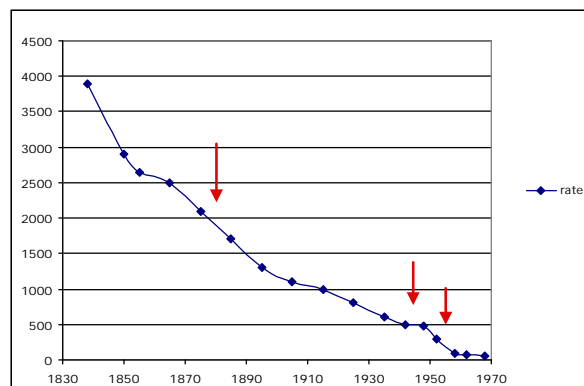
World Health Statistics 2007



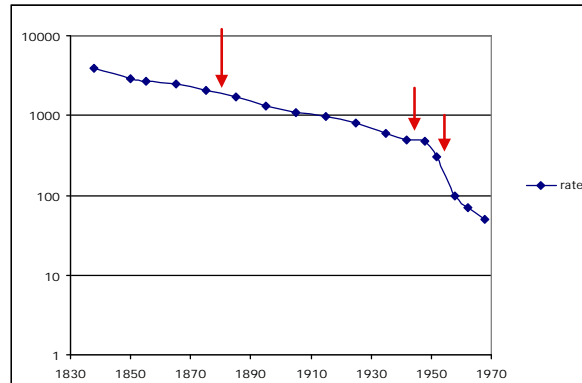
World Health Statistics 2007



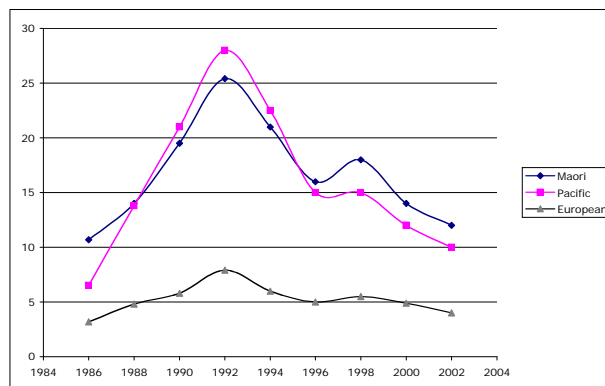
Mortality due to tuberculosis, England 1830 - 1970



Mortality due to tuberculosis, England 1830 - 1970

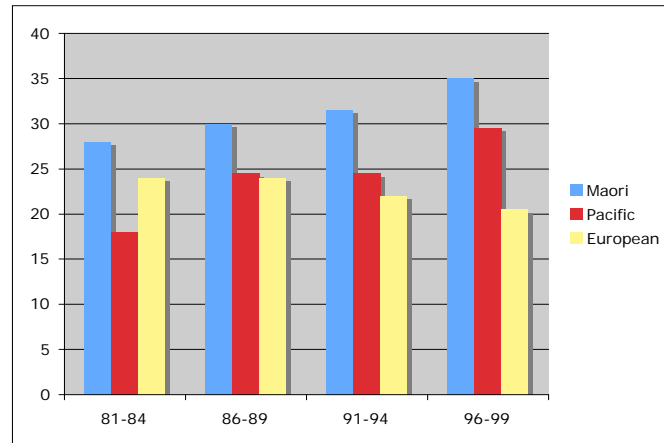


Unemployment, New Zealand, 1986 - 2002



Ministry of Social Development 2004

Breast cancer mortality by ethnicity



New Zealand Census Mortality Study

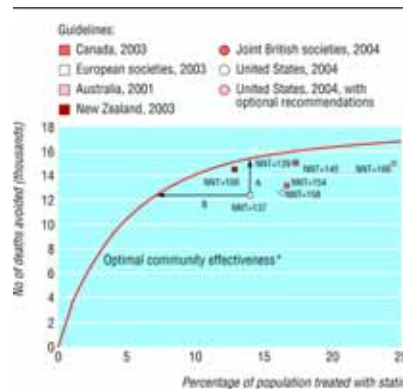
“The time has probably passed when the simple opposition of medical care and other determinants of health has any value. The more interesting questions concern which components of medical care and which influences upon other determinants of health justify investment.”

Stephen Frankel

CHOosing Interventions that are Cost Effective (WHO-CHOICE): EUR A

	DALYs averted per yr per million pop	Average cost per DALY averted
Tobacco excise tax: 300% of supply price	4641	\$46
Nicotine replacement Rx	670	\$3,511
Newer antidepressants	1295	\$6,526
Case management with SSRIs	2501	\$10,917

Impact of guidelines for statins



Manuel et al, BMJ 2006;332:1419

Cost and potential benefits of adjuvant cancer treatments, UK

	No. of patients	Potential benefit	Cost per patient cured
Adjuvant chemo for lung cancer	15	1 extra cure	£23,000
Neoadjuvant oesophagus	25	3 extra cures	£2,670
Aromatase inhibitors breast cancer	270	8 fewer recurrences at 5 years	£15,000
Herceptin early breast cancer	75	3 extra cures	£650,000

WIN A \$10,000 FIJI ISLAND

THE VOICE OF NZ WOMEN

New Zealand Women's

JUNE 2007 \$7.50 INC GST

JOIN OUR CAMPAIGN

why are New Zealand women being denied life-saving treatment?



The future

- “Improvements in public health are largely complete”
- New kinds of environmental threats
- Changing epidemiology of major diseases
- Health care and inequalities
- Choice = data + social process